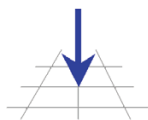
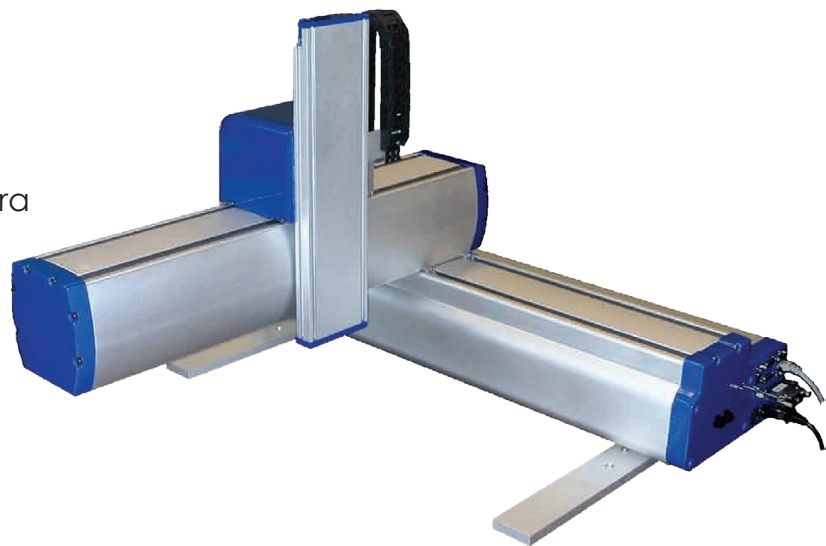


PRECISEPLACE ROBOTS

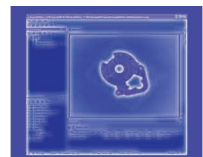
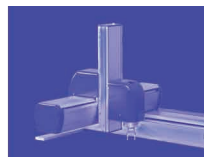
Can a robot installation be as simple as plugging the robot in?

Precise Automation makes it possible. PrecisePlace Cartesian robots come out of the box fully assembled and straight into your application. Just plug them into an AC outlet and Ethernet and they are ready to work. The controller and harnesses are embedded within the robot's structure, resulting in a much smaller footprint. No controller integration is required, no harness to purchase or thread and no extra controller cabinets.

PrecisePlace robots feature the powerful Guidance vision-guided motion controller, a novel patented direct drive system (U.S. Pat 7,343,684) and servo motor performance. These features enable smooth, quiet motion without the use of linear motors or other expensive components. This greatly reduces cost without sacrificing performance or capabilities and makes Precise robots ideal for applications where size and budget are critical.



PRECISE
AUTOMATION



General Specifications	Range & Features
Range of Motion & Resolution	
X-Axis	Available X-Axis Travel: 500 mm – 1000 mm
Y-Axis	Available Y-Axis Travel: 200 mm – 600 mm
Z-Axis	Available Z-Axis Travel: 240 mm
Optional: Theta Axis	+/- 360 degrees
Resolution	+/- 0.008 mm in X, Y and +/- 0.002 mm Z standard +/- 0.002 mm in X, Y and Z available with high resolution option
Repeatability	+/- 0.050 mm, 68-78 degrees F, limited by aluminum structure expansion
Performance and Payload	
Maximum Acceleration	0.6G
Maximum Speed	2,000 mm/sec
Z Force	Continuous upwards Z force – 60N Continuous downwards Z force – 80N
Payload	PrecisePlace 2300A – 5 kg for Y lengths <= 400mm, 4 kg for Y > 400mm PrecisePlace 2400A – 3.5 kg for Y lengths <= 400mm, 2.5 kg for Y > 400mm
Controller	AVAILABLE GUIDANCE CONTROLLERS: Guidance 3410A (G3XD-EA-A3410), Guidance 3414A (G3XD-EA-A3414), Guidance 3416A (G3XD-EA-A3416)
Interfaces	
General Communications	RS-232 channel, Ethernet port, remote front panel
Digital I/O Channels	12 optically isolated digital inputs, 8 optically isolated digital outputs included on the X-Axis End Cap Facilities Panel. Additional 8 isolated digital inputs, 8 isolated digital outputs provided on Z-axis. All outputs rated at 100 mA maximum per channel, except for channel 1 in X-axis end cap, which is rated at 500 mA. Additional remote I/O available via Precise RIO modules or 3 rd party MODBUS/TCP devices
Analog I/O Channels	Facilities for 2 analog inputs included on controller and 4 or 6 optional analog outputs optionally available on controller
Pneumatic Lines	Two air lines, each 75 PSI maximum, provided at Z-axis drive and routed internally to fittings on the X-Axis End Cap Facilities Panel.
Operator Interface	Web based operator interface supports local or remote control via browser connected to embedded web server
Programming Interface	Three methods available: DIO MotionBlocks (PLC), embedded Guidance Programming Language (standalone, modeled after Visual Basic.Net), PC controlled over Ethernet using TCP/IP
Required Power	Input range: 90 to 264 VAC single phase, 50-60 Hz, 500 watts maximum
Weight	30 kg typical, will vary with size



automate with ease